



**SIXTH
FORM
POST-16**

أكاديمية جيمس ولينغتون - شارع الخيل
**GEMS Wellington Academy
AL KHAL**



**GEMS
EDUCATION**



WELCOME FROM THE SECONDARY PRINCIPAL

Dear Parents and Students,

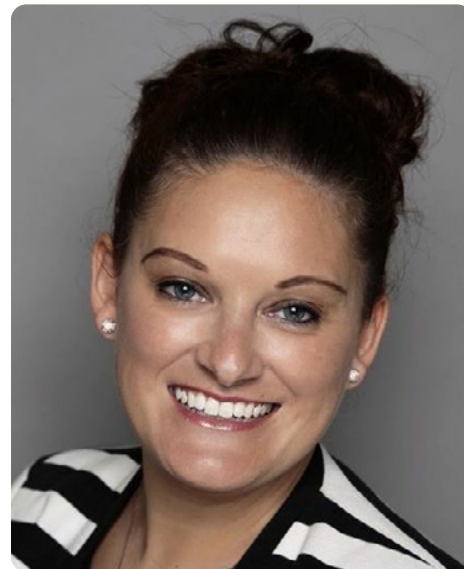
A warm welcome to GEMS Wellington Academy - Al Khail Sixth Form. In choosing our school, you will find yourself in a supportive environment, that will challenge you to be the very best you can be. The Sixth Form transition is an exciting one, as it is an opportunity for our students to not only progress on a personal level academically, but to develop their interpersonal skills by becoming the leaders of our student community. We believe that each student deserves the best possible support in their transition through Post-16 education and this handbook will assist in setting our students off on that journey into Year 12 and 13. It also will highlight the expectations and high standards we have of you in Sixth Form.

As a member of our Sixth Form, your learning environment will change considerably Post-16. There is a mutual trust and respect that you will learn for both your teachers and your studies. You will find that your relationships with your teachers become more of a partnership, where you will work together to navigate towards your aspirations and goals. You need to be prepared to work independently and self-motivate, setting deadlines and targets for yourself. Resilience and perseverance will be two words that you hear over the next two years, as the step up to the Post-16 pathways, be it A-Level, BTEC or blended is a challenging one. You will be surrounded by a team of staff that are trained to get the very best from you and guide you every step of the way.

However, Sixth Form life is about much more than just tests and examinations. I actively encourage you to use this time to develop skills and experience opportunities outside of the classroom. The holistic programme in Sixth Form at the Academy is broad and has been designed with you in mind. We want you to get involved with sport, the arts, debating, mentoring, leadership to name just a few of these opportunities. The biggest regret you will have at the end of your time at the Academy is if you don't step outside of the common room and engage in the wider school community and enrich your time with us. Success is measured by more than just grades, and although ultimately important, contributing to wider school life will teach you valuable skills that you will be able to take with you in the next stage of your life. Ask yourself as you start Sixth Form, *what do you want your legacy to be at The Academy?*

Remember, what you get out of the Sixth Form at The Academy very much depends on what you put into it. Our aim is to see our students leave as happy, successful, world-ready young people who have taken full advantage of everything our wonderful school has offered them.

Gemma Thornley
Secondary Principal



WELCOME FROM THE ASSISTANT PRINCIPAL

Dear Parents and Students,

I am delighted to introduce our Post-16 curriculum offer for the next academic year.

It gives me great pleasure to welcome you to our Sixth Form at GEMS Wellington Academy, Al Khail. GEMS Wellington Academy is a Premium British Curriculum school in the heart of the newly-developed Dubai Hills community. At the Academy we welcome students from around the world and on our vibrant, multi-cultural and inclusive learning community.

With the support of highly-qualified and experienced UK teachers and access to some of the best facilities in schools across Dubai, our students aspire to be their very best. Our Sixth Form students are able to select from a wide range of A-Level, International A-Level and International BTEC (vocational) courses allowing their choices to center on subjects in which they are interested, skilled and talented along with the consideration of Post-18 routes. We do not provide a 'glass ceiling' for any student and aim to be a school that nurtures a genuine passion for learning, delivering a truly well-rounded, holistic education. At The Academy we don't simply aspire to enable our students to achieve their goals, but we aim to inspire them to exceed their own expectations. In addition, our Sixth Form students experience a bespoke and vibrant core enrichment programme which develops skills and areas of interest in leadership, community service, extended research and innovation. As part of our enrichment programme, students are offered a bespoke 'High Performance Learning Curriculum' that ensures students graduate from The Academy with more than just academic qualifications.

Our Sixth Form students also have access to a designated Careers and University Adviser who guides our students in their chosen career paths whilst providing support in making applications to universities around the world. We are an inclusive Sixth Form, with world class facilities and outstanding teaching support. We provide an exceptional platform upon which each student can grow, develop and be successful. I am very proud of the Sixth Form experience and the type of student we produce at The Academy. The staff and I look forward to working with you to provide support and guidance as you enter this final, exciting and challenging phase in your school career.

Thomas Moriarty
Assistant Principal





WELCOME FROM THE HEAD OF SIXTH FORM

Dear Parents and Students,

I would like to start off by saying welcome to the Sixth Form to both students and parents! I am very pleased to be given this opportunity to work with you all to ensure that students achieve their potential during their time with us.

My aim is to make sure you, the students, strive academically, pastorally and socially. As well as making sure students are on the correct pathway, we also want to make sure our students have all the right skills for life after Sixth Form. One of the key skills that students will need to develop in Sixth Form is independence, especially for those students who are moving from GCSE to A-Level or BTEC. To assist you in developing independence, students will be allocated independent study time, and it is up to the students to use that time in order to prepare for lessons, complete homework/coursework or to read around your subject. As well as independence, tutor time sessions will help prepare students for life after A-Levels and BTEC. Students will be supported with university applications, personal statements and career guidance. These holistic skills will prepare students for life at our Sixth Form and for the future.

Moreover, students will be given the chance to sign up for enrichments this year. These range from Model United Nations, Duke of Edinburgh, Global Futures, Extended Project, Sports Leaders and many more. I cannot stress the importance of enrichments as they will not only help students develop new skills and make new friends, but these enrichments are vital building blocks that can be used in personal statements and for university applications. Many of the enrichments we offer are certified and some like the Extended Project has UCAS points attached to it. The two years at Sixth Form are not always easy, but I am sure students will all do fantastically well. Please do also remember that if any student or parent is struggling or if anyone needs any help, advice or guidance, my door is open.

Finally, we are lucky, that at The Academy we are a close knit community. Parents are free to contact teachers, form tutors or myself if they ever need it. We welcome both questions and suggestions to make sure our Sixth Form is not only truly inclusive but a true community. A strong relationship between parents, students and teachers will ensure that all members of the Sixth Form will be successful, no matter what they choose to do.

I wish you all the best of luck this year, and I look forward to celebrating your successes.

Fatima Safi
Head of Sixth Form



LIFE AT THE ACADEMY – THE EXECUTIVE STUDENT LEADERSHIP TEAM

Dear Parents and Guardians,

It is with both pride and passion to welcome you to our Sixth Form here at The Academy! We pride ourselves on positive relationships with our students, which is a product of our growth and development since this academic provision established. As one of our main priorities is that our students feel a sense of belonging and comfort with the transition from KS4 into KS5 and we pride ourselves in ensuring that this is something the students recognise.

The Academy now offers an extensive broad curriculum, through both A-level and BTEC pathways offering students a wide variety of subjects, which will prepare them for university. Alongside the importance of their academic ability, we also offer an exciting and purposeful complimentary studies programme where there is something for everyone.

During morning registration, we offer students a tutor programme that is fun and engaging for all. This year we have an amazing opportunity where our students will participate in a 'Pen Pal' activity where they will share a series of letters, emails and gift packages with other Sixth Form students across the world. They will be given the opportunity to share their educational experiences, aspirations and life stories. This will promote communication skills, empathy and compassion towards others. This allows students to take up opportunities that don't often arise.

We look forward to welcoming some more inspirational students who will positively contribute to the growth and success of what we have achieved so far!

Charlotte Robinson
Assistant Head of Sixth Form





LIFE AT THE ACADEMY – THE EXECUTIVE STUDENT LEADERSHIP TEAM

HEAD BOY & HEAD GIRL

Dear Parents and Guardians,

I am Adriana Santos, your Head Girl here at The Academy, and I am so excited to welcome you all back to school (or welcome you for the first time if you're a new student). As someone who knows just how important it is to feel loved and supported, I am committed to creating a welcoming environment that feels like a second home to all of us.

As Head Girl, I intend to strengthen the bond between primary and secondary school students, because we're all one big family here in our Sixth Form, and we look forward to welcoming you. Most importantly, I want each and every one of you to feel proud of calling yourselves alumni of The Academy. I'll be promoting positivity, growth, and inclusivity every step of the way, because when we lift each other up, we all rise together. I'm committed to making sure that every voice is heard, because your experiences and ideas matter. We're all on this journey together, and I want to make sure that we all become lifelong learners, eager to soak up knowledge and grow as individuals. So let's create a legacy that we can all be proud of, starting right now. With your help and support, the ESLT team and I will make sure that this academic year is one to remember.



Adriana Santos
Head Girl



Abdulla Hasan
Head Boy

Dear Parents and Guardians,

I am Abdulla Hasan, your Head Boy in The Academy. To our returning students, welcome back! Your familiar faces bring a sense of unity and continuity that anchors our school community. To our new students, welcome to our extraordinary school family! You have joined a community that embraces diversity, encourages growth, and fosters a love for learning. To the teachers and leadership team, thank you for your unwavering dedication and commitment to providing us with a nurturing and stimulating learning environment.

As Head Boy, I promise to serve as a bridge between the students and teachers. I am here to listen to your ideas, concerns, and aspirations. Together, we will strive for excellence, create an inclusive environment, and create lasting memories. My aim is to boost communication across the school to allow students and teachers to have the best school environment possible. As we embark on this academic year, I encourage you all to actively participate in our vibrant school community. Take advantage of the numerous opportunities available, be it in academics, sports, arts, or extracurricular activities. Let us support and uplift one another, fostering a culture of collaboration and unity.

Let us embark on this incredible journey together, making our school community an inspiring place where dreams become reality.



TOP TEN HIGHLIGHTS OF OUR UNIQUE SIXTH FORM OFFER

We have put together ten highlights that you might not know about our Sixth Form provision, which collectively helps us stand out, ensuring all our students get a truly first-class British education.

1. All subjects are taught by experienced and specialist iBTEC and A-Level teachers from the UK.
2. Small class sizes mean that students benefit from very personalised teaching and support.
3. Students benefit from state-of-the-art facilities, including a purpose built Sixth Form Centre offering areas to work independently of the teacher.
4. Students and their parents benefit from receiving 'real time' academic performance data through our online Go4schools platform removing the problem of having to wait for news about achievements in school.
5. Students benefit from daily access to Careers and College Counselors, Ms. Amanda Jewell and Ms. Lara Freij, who provide expert support and guidance as students progress toward university and employment.



6. All students have a personal tutor to support them with their pastoral care ensuring they feel ready, equipped to learn and succeed.
7. Students gain from an extensive enrichment and internship programme ensuring they are able to offer future employers or universities more than just a great set of A-Level and BTEC results respectively. We have close links with external organisations such as King's College Hospital, UAE.
8. Student athletes in swimming and football benefit from our elite sports programme to improve technical and physical performance and gain internship experience.
9. All students participate in our Complementary Studies programme to enhance independent learning skills and prepare them successfully for university.
10. All students can take up a range of leadership positions such as peer mentoring, sports teams, Sixth Form council (including Head Boy and Girl), school improvement and a range of extra-curricular activities.

OUR CURRICULUM OFFER

GEMS Wellington Academy - Al Khail is a British Curriculum School that offers A-Level, International A-Level and International BTEC qualifications during Post-16 education.

A-LEVEL

A-Levels are recognised and respected by universities and employers as the 'academic gold standard' of international qualifications around the globe. They strongly support entry into traditional professions such as medicine and engineering, and with the right combinations of subjects also provide high levels of flexibility for individuals who are still deciding on a specific university course and career pathway.

INTERNATIONAL A-LEVEL (IAL)

International A-Levels are also recognised by all the top universities worldwide. International A-Levels are similar to A-Levels but they have a more flexible, modular structure than A-Level and the syllabus content is designed to have greater international relevance.

Students will study a minimum of three and a maximum of four A or IALs subjects in both Year 12 and Year 13.

INTERNATIONAL BTEC LEVEL 3 QUALIFICATIONS

The **International BTEC Level 3** is in tune and up-to-date with the latest content relating to industries such as Technology, Biomedical Science, Business, Sport and Performing Arts. The heart of the qualification focuses on students putting their learning into practice. They learn through real-life scenarios, equipping them with the knowledge and skills to succeed in whatever progression path students choose in the future.

The UK exam board (Pearson) have worked with employers to develop these qualifications, to help ensure that the

International BTEC Level 3 is recognised by employers, universities and Ministries of Education around the world. As well as U.K. universities, International BTEC Level 3 qualifications are endorsed by universities in Canada, New Zealand and Australia, opening up even more opportunities and progression pathways for your students. Students are able to combine their studies with A-Levels, progress to higher education, or start their careers with life-long transferable skills. The flexible structure of iBTECs allows students to explore sectors before deciding their future path. The courses are international, so if personal circumstances change during a BTEC course, students can continue studying in a different country.



FACTS

”
90% of BTEC students are likely to be employed after graduating.
London Economics

”
74% of UK employers prefer a mix of vocational and academic skills in their employees, or value them equally.
Pearson/CBI skills survey 2015

”
 In the U.K., **1 out of 4 students** now gain a place at university with a mix of both BTEC and A-Level qualifications.

”
 In 2019, over **100,000 students** gained a place in a UK University having followed a BTEC pathway.

At The Academy, we work with each pupil at a personal level to ensure their chosen pathways matches the undergraduate course of their choice through effective careers education and guidance.

MINISTRY OF EDUCATION CURRICULUM FOR MUSLIM AND ARAB STUDENTS

The Year 12 timetable for Muslim students also includes two compulsory lessons of Islamic Education. Students registered under Arab passports will study Arabic for three lessons per week and complete the Ministry of Education curriculum and subsequent internal assessments.

WHAT MAKES OUR CURRICULUM DIFFERENT?

Our approach to the curriculum is very different to that of other schools in the UAE. We begin year 12 by building a personalised and individual support system that provides the best possible platform for students' success. Our philosophy here at The Academy is centred on the development of the whole child ensuring they can not only succeed in the real world but thrive in it.

In Year 12, our students embark on our The Academy Education and life skills programme that helps our students to develop life skills and an aptitude to face every day extraordinary situations with more confidence, accelerates academic performance and helps the school to promote the social, moral, cultural and spiritual development in all our students. We are proud in knowing that this programme ensures our students develop the qualities that they need to flourish in their chosen pathway and beyond both in higher education and the world of work.



SCIENCE OF LEARNING

We believe in preparing our students for the world of tomorrow, in equipping them with the skills and knowledge they'll need to make a lasting, positive contribution. That's why we want to ensure that every child in our care benefits from the very best teaching and learning experiences possible.

Teaching at our Academy is therefore underpinned by the 'Science of Learning'. It's our acknowledgement that, in order for our students to learn most effectively, our teachers need to understand how the brain learns best. Because it's by understanding the cognitive architecture of the brain, how knowledge itself is constructed in the brain, as well as the importance memory plays in deep learning and understanding, that our teachers are able to deliver an unparalleled learning experience.

That said, we're the first to acknowledge that there is more 'art' to teaching than science – and that should never change. Yet it's by being at the forefront of evidence-based, cognitive science approaches to teaching and by using evidence-informed strategies that maximise the brain's capabilities, that we can give our students an edge and the best possible chance of success, readying them to take on whatever challenges the future may bring.

Our world-class approach to teaching and learning manifests itself across the Academy in the following ways:

- Our entire Academy leadership team has been trained in the Science of Learning
- We're committed to ensuring all our parents and students fully understand and appreciate the benefits of our approach
- Every teacher at the Academy understands how memory works and how best to support students in realising their learning potential
- Our strategies are focused on enhancing attention, encoding, cognitive loading, retrieval and remembering – in simple terms, that means helping students get the most out of their education
- Our Science of Learning approach is carefully applied to curriculum design as well as long- and short-term planning
- We place strong emphasis on student wellbeing, recognising the important role that this plays in effective learning



OUR CURRICULUM OFFER CONTINUED

GEMS WELLINGTON ACADEMY POST-16 ELITE SPORTS PROGRAMMES

We are proud to offer our Football and Swimming Elite Sports programmes, for Post-16 students, operated in conjunction with It's Just Football (IJF) and Hamilton Aquatics. These exciting programmes will give talented young athletes between the ages of 16-19 the chance to combine academic studies with tailored elite level performance training and sports science education in our state-of-the-art facilities. Our student-athletes will also gain from securing internships giving them firsthand experience of the sports industry.

Student athletes will benefit from a tailored weekly timetable giving them access to their chosen academic pathway together with:

- » Elite performance coaching
- » Strength and conditioning
- » Sport nutrition
- » Sports therapy
- » Internships with local sports partners
- » Governing body awards in coaching and officiating
- » First Aid training
- » Local, regional and national competition
- » International tours

The elite sports programme will be led by highly qualified coaches/professionals in swimming and football ensuring students benefit from the latest strategies in elite sports performance.

A typical week for a student studying at The Academy who is also part of our elite football programme is outlined below:

WEEKLY STUDENT-ATHLETE FOOTBALL PROGRAMME						
	Sunday	Monday	Tuesday	Wednesday	Thursday	Friday
7am - 8.30	Squad Training	Strength and conditioning	Squad Training	Video Analysis	Physiotherapy	Squad Training
8.50 – 12.10	iBTEC or A-Level Study	iBTEC or A-Level Study	iBTEC or A-Level Study	iBTEC or A-Level Study	iBTEC or A-Level Study	
Lunch						
1pm – 3pm	iBTEC or A-Level Study	iBTEC or A-Level Study	iBTEC or A-Level Study	Internship	Squad Training or Competitive Matches	
3pm – 4.15pm	Coaching / officiating Awards	Personal Mentoring				

Football performance
 Internship – work placement
 Academic study





OUR CURRICULUM OFFER CONTINUED



A typical week for a student studying at The Academy who is also part of our elite swimming programme is outlined below:

WEEKLY STUDENT-ATHLETE SWIMMING PROGRAMME						
	Sunday	Monday	Tuesday	Wednesday	Thursday	Friday
5am - 7.00am	Squad Training	Squad Training	Squad Training	Squad Training	Yoga	Squad Training
7.00 - 7.45am	Sports Breakfast	Sports Breakfast	Sports Breakfast	Sports Breakfast	Sports Breakfast	Yoga
8.50 – 12.10	iBTEC or A-Level Study	iBTEC or A-Level Study	iBTEC or A-Level Study	iBTEC or A-Level Study	iBTEC or A-Level Study	
Yoga						
1pm – 3pm	iBTEC or A-Level Study	iBTEC or A-Level Study	iBTEC or A-Level Study	Internship	Land training	
3pm – 4.15pm	Coaching / lifesaving Awards	Independent study	Independent study			
4.30 - 6.30pm	Squad Training	Squad Training	Squad Training			

Football performance

Internship – work placement

Academic study



OUR CURRICULUM OFFER CONTINUED

SUBJECT OVERVIEWS

A-Level and International A-Level Qualifications

As a guideline, students must achieve a Grade 6 in five GCSE or equivalent subjects to be able to study A-Level qualifications here at The Academy. However, due to the academic challenge of all subjects at A-Level we have specific requirements for certain subjects, for example: A-Level Maths requires a Grade 8 at GCSE Maths for entry onto the course.

Currently, we offer twenty-two different A-Level/International A-Level subjects, providing a great variety of choice for students allowing us to build a programme that meets their needs. Most of our students will study 3 subjects as universities will look for a student's best 3 results.

The difference between A-Levels and International A-Levels

Both are known and accepted by the best universities around the globe. International A-Levels are modular in nature, have an international content and are examined throughout the 2 years of study. A student may therefore complete a re-sit (although not recommended) providing this can be planned into their programme of study so that they don't fall behind. A-Levels however are linear in nature meaning that examinations are completed only at the end of the two years of study.

We do not run AS qualifications. Students will however, sit rigorous 'internal examinations' at the end of Year 12 to establish current performance and help us provide universities with accurate predicted grades.

International BTEC Level 3 Qualifications

The entry requirement for iBTECs at Level 3 require 5 GCSEs at Grade 5 and above. iBTECs are a more practical, career-related international option and pathway to university and employment. Students are required to build a portfolio of coursework throughout the two years. Work is externally moderated by Pearson (Edexcel) but there is no external examination.

Currently we offer 5 International BTEC Level 3 Subsidiary Diploma and Diploma qualifications worth the equivalent of one and two International A-Levels respectively.



SIXTH FORM PATHWAYS

GEMS WELLINGTON ACADEMY - AL KHAIL SIXTH FORM PATHWAYS

*Pathway	Pathway A International Career Related	Pathway B Mixed International Career Related and Academic	Pathway C Academic
Entry Requirements (to be supplied)	5 GCSEs at Grade 5 or above	5 GCSEs at Grade 5/6 or above	5 GCSEs at Grade 6 or above (Grade 8 for Maths, 7 for English and 8 for Science)
Year 12 and 13 Qualification Structure	International Level 3 BTEC Diploma and Subsidiary Diploma (3 A-Level equivalent) 1 Diploma and 1 subsidiary Diploma in another subject Or A double Diploma in two subjects	International Level 3 BTEC Subsidiary Diploma with 2 A-Levels or International Level 3 BTEC Diploma with 1 A-Level	3 A-Levels or IALs
Assessment	Coursework No external Exams	External exams (A-Level) at the end of Y13 and Coursework (iBTEC)	External exams at the end of Y13
Co-Curricular	Internships / Work placements	Enrichment or Internships / Work placements	Enrichment
Future Aspiration	Higher Education, Apprenticeships and Employment	Higher Education, Apprenticeships and Employment	Higher Education including Oxbridge, Russel Group and Ivy League

*Muslim and Arab students will also follow the MOE curriculum in addition to the chosen pathway in Year 12.

EXAMINATIONS

Examinations will take place in January and/or June, depending on the course and qualification. There is a fee for each examination a student takes which is met by the parents of the student. The fee varies from subject to subject and qualification to qualification.

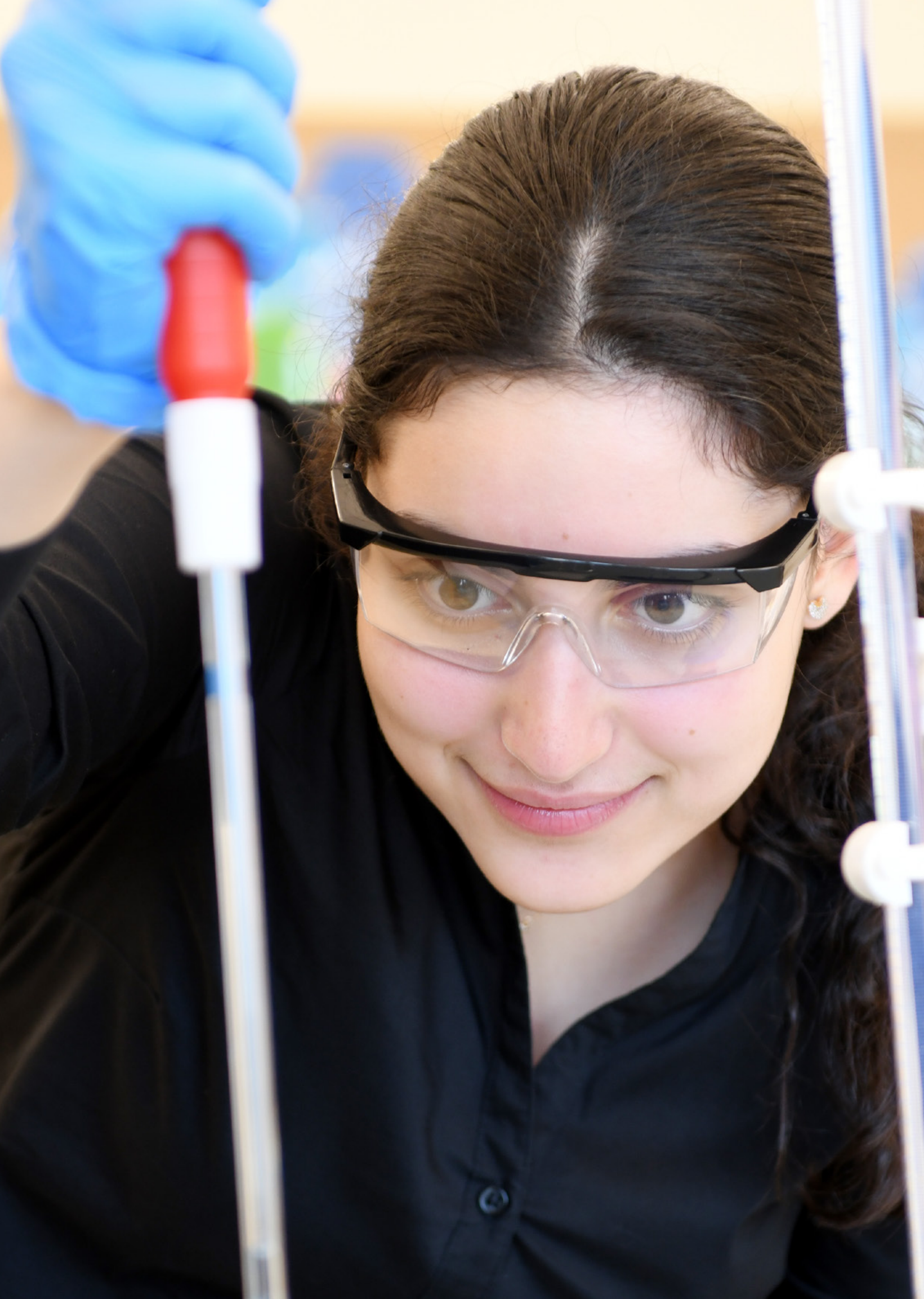
SELECTING COURSES

- » Consider subjects you enjoy and currently do well in. Give some thought to choosing subjects that you have not studied before but don't be tempted to choose them just because they are new. Make sure you have the skills, knowledge and aptitudes which are suited to the study of those subjects. Consider carefully your CAT4 profile and any bias you may have.
- » Listen to the advice of your teachers.
- » Don't choose a subject or pathway because your friends have. Choose what is right for you.
- » Research which subjects are required or benefit the career you may wish to pursue. You don't want to discover that you can't access the right career you want because you don't have the right BTECs or A-Levels.





SUPPORTING OUR STUDENTS



OPTIONS PROCESS

October – One to one meeting with Careers councilor and Head of Sixth Form

November – Open evening

January – Sixth Form taster sessions

February – Submit first round of options

March – Guidance meetings

April – Final option meetings

August – GCSE results day and final adjustments

APPLYING FROM ANOTHER SCHOOL

Our Admission Team will support you with the application process and will be the point of contact from initial enquiry to making subject choices. In order to offer a place in the Sixth Form to an external student, we will require evidence of their suitability for the courses they are applying for. This includes current school reports, predicted grades and a reference from your current school. Once we have received all this information students will then be invited in for an interview with the Head of Sixth Form.

SCHOOL COUNSELLORS

At The Academy, we have a dedicated school counsellor who is available to all of our students. Students can see Susanna regularly or can pop in for just a chat.

Our school counsellor also runs wellbeing sessions during peak exam periods when students are feeling the pressure more than ever. As well as this, our counsellor also runs weekly sessions focusing on mental health, wellbeing and stress relief.

TUTOR TEAM

In the Sixth Form, each student will be assigned a Form Tutor. We operate a vertical tutoring system here at The Academy meaning that Form groups are mixed with both Y12 and Y13 students. This is an effective way to create a sense of community across the Sixth Form and enables students to learn and share their experiences to the benefit of students in both year groups.



Susanna Grace Johnson
School Counsellor





CAREERS AND FURTHER EDUCATION

Dear Parents/Guardians,

Preparation for applying to Higher Education will take many forms and every experience you have, every opportunity you take and every skill you develop during your time at school and beyond will contribute towards your success in applying to university and employment.

It can be difficult choosing a suitable degree course, a university and even a country to study in, but we will be there to support and guide you through the process. Some universities will have very complex application systems and others will be relatively straight forward but you will need to take responsibility for researching entry requirements, application deadlines, registering for admission tests, preparing to write your Personal Statement, Common App essay or letter of motivation and ensuring you have all the required documentation etc.

With the World of Work and Higher Education changing so rapidly, I believe it is essential to always put the student at the heart of my guidance, discussing suitable and relevant opportunities and inspiring them to find their best fit. My passion is supporting students through the university application process, guiding them with the research required to find the course, topic of study and career path that suits their skills, abilities, interests and personality, amongst the exciting and diverse opportunities available to them.

This can feel very overwhelming at first – but you can book appointments to discuss any aspect of your transition from school to university/employment with me in the Sixth form office or Careers Hub and the amazing Sixth Form Team will support you to ensure that you make the right decisions for you and your future.

I look forward to meeting you all soon.



Amanda Jewell
Head of Careers and Transition



UNIVERSITY DESTINATIONS

Over the last few years, our students have been successful in gaining top places at various universities around the globe. Below are some of the universities where our students are gaining their degrees and shaping their futures.





BEYOND THE CLASSROOM

ESLT - EXECUTIVE STUDENT LEADERSHIP TEAM

This team is made up of Year 13 students and led by the Head Boy and Head Girl. The application process is rigorous and includes an application letter, assessed activities and panel interview for shortlisted candidates with our leadership team. Each member of the team has a designated leadership role, and these range from events and publicity, student well being, achievement and attendance. Each member of the team is expected to deliver speeches at major school events, address their fellow students during assemblies, and play a role in the secondary Leadership Team further down the school.

SENIOR CHAMPIONS

There is a large champion team made up of Year 12 and 13 students. Year 12 students are invited to apply to become a champion during the first half of term one and begin their weekly duties during break time and lunchtime shortly after the half-term holiday. Other duties include greeting visitors, touring prospective families and supporting the senior champions during whole school events. The duration of a champion's service is one calendar year.

INTERNATIONAL AND LOCAL TRIPS

Students will have opportunities for international and local trips at allocated periods throughout the year. We offer a range of international trips, whether it's building schools in Kenya, learning how to Ski in Switzerland or touring the football grounds in Spain. International trips allow students to develop their knowledge of the world and to challenge themselves with new experiences. As well as this, students will have the chance to go on local trips within their subject areas, whether it's the Muscle Show for BTEC and A-Level PE, the Dubai Design District for Product Design or Expo City in Business Studies. Here at The Academy we strongly believe what happens outside of the classroom is just as important as what happens in it.



ENRICHMENT AND INTERNSHIPS

DUKE OF EDINBURGH AWARD SCHEME

The Duke of Edinburgh Award Scheme is a well-established programme, which provides our students with access to this internationally recognised and well-regarded award. The majority of our Sixth Form students complete the Silver Award in Year 12, with the students travelling on an overseas expedition to Nepal. This is undoubtedly a real highlight of their time in our Sixth Form. The Silver Award includes sections in Volunteering, Physical and Skills development, with an expedition and residential component.

SPORTS LEADERS AWARD

The PE department offers Sixth Form students the opportunity to complete the Level 2 UK Sports Leaders Award. Focusing on guided and peer-to-peer learning, this award develops effective communication and organisation whilst equipping the students to lead basic physical activities to younger students, their peers, and adults.

MODEL UNITED NATIONS (MUN)

The school runs a successful MUN and debating club. Although supported by staff, this programme is largely operated by an elected Sixth Form Secretary General and MUN directors. The club members will represent The Academy at a number of local MUN and debating competitions and these students are responsible for coaching the younger students to develop skills and attributes required to be successful.

GLOBAL FUTURES CURRICULUM

The Global Futures Curriculum (GFC) is a bespoke programme for high school students co-created by GEMS and Singularity University. The GFC provides students with the insight, conceptual framework and tools to understand, and succeed in, a rapidly changing society.

The GFC at The Academy consists of ten 2-hour modules for students aged 14-18. The programme allows students to understand the nature of exponential technologies (Genetics, Nanotech, Robotics, Quantum Computing, Augmented and Virtual Reality, 3-D printing, Brain mapping and brain scanning, Sensors etc.) and how to leverage it for their future success in a world of accelerating change.





ENRICHMENT AND INTERNSHIPS CONTINUED

PERFORMING ARTS

A rich and prolific range of performance opportunities are available to every student at The Academy. The Music and Drama Departments host a thriving programme of co-curricular events encompassing a variety of activities that encourage and challenge the large numbers of students that regularly participate.

From grand scale productions for all ages to smaller ensemble pieces and a House Drama competition, there is plenty to be involved with.

The making and performing of arts at The Academy enable students to develop essential life skills: physical and vocal self-confidence, the social disciplines of working in a group, an extended emotional range, development of creativity and a respect for the work of others.

The department has an enviable reputation for the quality of its public performance work and original writing. Past performance projects have included the Wizard of Oz, Annie, Beauty and the Beast, Peter Pan and the most recent Hairspray. Students can also opt to be involved in technical theatre, costume and front of house roles. Theatre productions, for many of our students, form the highlight of their year. The passion, talent, care and support that goes into the making of our theatre projects is inspirational and always unforgettable.



REFLECTIONS OF YEAR 13 STUDENTS

Being a part of The Academy really brought out my inner skills, as we are encouraged to go above and beyond our academic capabilities. It is a huge jump from GCSEs to Sixth Form but our teachers and Sixth Form Team have been there every step of the way to support us. Following the blended pathway has been beneficial to my learning style as I am able to have a mixture of exams and coursework.

Isla



The transition from GCSE to Sixth Form is not the easiest but I personally think that the staff here at The Academy put in a lot of effort to make the transition as smooth as possible. A-Level really is a challenge, but it allows us to be more independent and to develop ourselves into becoming mature and sensible young adults. Also, at The Academy, the Sixth Form area itself is a very comfortable and learning friendly environment. More so, we, as students, are here to lead initiatives and events. For example we have organised food drives, bake sales, festivals, national day and many more. The level of independence at Sixth Form is perfect.

Radha



Sixth Form is very different to secondary school. There is a lot more free time that needs to be used for independent study. We also have a lot of work in terms of our A-Levels and BTECs but the support from teachers is exceptional. Sixth Form is hard work but it is also a lot of fun. We have complementary studies built into the timetable in which we can pick what we want to do. This can include Duke of Edinburgh, Cooking, MUN, Waterpolo, HIIT workouts, Filming 101 and many more. The Sixth Form helps us academically but also helps us develop as rounded students.

Akshat





GEMS EDUCATION

 +971 4 512 9100

 registrar_The Academy@gemsedu.com

 gemswellingtonacademy-alkhail.com

 Al Khail Road, Exit No.18,
Dubai, UAE

 Established 2013

